

BELZONA RESTORES CORRODED HEAT EXCHANGER

CUSTOMER

Hotel, Egypt

APPLICATION DATE

April 2006

APPLICATION SITUATION

Tube Sheet from chiller unit

PROBLEM

The tube sheet was badly corroded. Particularly deep erosion on tube sheet around the tubes.

PRODUCTS

Belzona® 1311 (Ceramic R Metal)

Belzona® 1341 (Supermetalgilde)

SUBSTRATE

Carbon Steel

APPLICATION METHOD

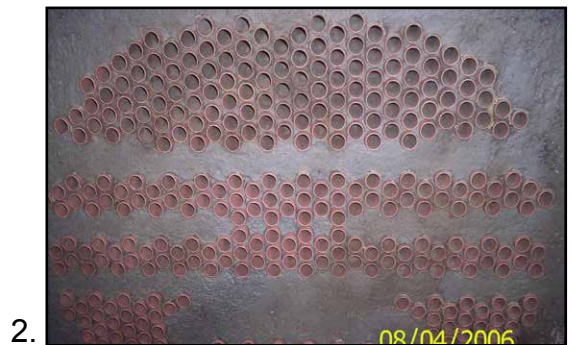
This application was carried out in accordance with Belzona Know-How System Leaflets HEX-1 and HEX-3. Belzona® 1311 was used to rebuild the damaged area and Belzona® 1341 was used to protect it.

BELZONA FACTS

The Belzona repair method allowed application to be carried out in situ with minimal disruption. The Belzona system has a proven track record of providing long term corrosion protection on such equipment.

PICTURES

1. The original corrosion damage
2. After Surface Preparation
3. Belzona 1311 application
4. Completed Belzona® 1341 application



For more examples of *Belzona Know-How In Action*, please visit <http://khia.belzona.com>



Belzona products are manufactured under an ISO 9000 Registered Quality Management System.

UK • USA • Canada • China
www.belzona.com

